

**HUNTERDON COUNTY  
DEPARTMENT OF HEALTH**  
PO Box 2900, Flemington, New Jersey 08822



**Date: November 28, 2011**

**PUBLIC HEALTH MESSAGE**

**UPDATE: Hunterdon Influenza-Like-Illness Surveillance on Webpage**

**To: Health Care Providers, HMC (ED, IP, Nursing), Local Boards of Health, School Nurses, Day Care Centers, Long Term Care Facilities, Human Services and Pharmacies**

**From: Bhavani Sathya, Hunterdon County Epidemiologist**  
Phone: 908-788-1351  
Email: [health@co.hunterdon.nj.us](mailto:health@co.hunterdon.nj.us)

The Hunterdon County Department of Health is now posting links to local, state and national influenza surveillance on its flu webpage at:

**<http://www.co.hunterdon.nj.us/fluiinfo.htm>**

Email notices including this link, will be sent out when updates to our local surveillance become available. The one page local surveillance for the week ending Nov. 12<sup>th</sup> is attached. ***Blast fax notifications will no longer be sent for ILI surveillance updates.*** If you are only receiving LINGS messages by fax and would like to provide an email address, contact the health department at [health@co.hunterdon.nj.us](mailto:health@co.hunterdon.nj.us).

The Health Department acknowledges and thanks the following agencies for their gracious participation as part of our county disease surveillance program:

- |   |                                       |
|---|---------------------------------------|
| <b>East Amwell School</b>                   | <b>Hunterdon Care Center</b>          |
| <b>Voorhees High School</b>                 | <b>Independence Manor</b>             |
| <b>Holland Township School</b>              | <b>Country Arch Care Center</b>       |
| <b>Reading-Fleming Intermediate School</b>  | <b>Rolling Hills - Hunterdon</b>      |
| <b>High Bridge Middle School</b>            |                                       |
| <b>Clinton Public School</b>                | <b>Phillips-Barber Family Health</b>  |
| <b>South Hunterdon Regional High School</b> | <b>Hunterdon Pediatric Associates</b> |
| <b>J.P. Case Middle School</b>              | <b>Hunterdon Medical Center</b>       |

If you have any questions regarding this information, please contact the Health Department at (908) 788-1351 or [health@co.hunterdon.nj.us](mailto:health@co.hunterdon.nj.us)

# HUNTERDON COUNTY INFLUENZA SURVEILLANCE

MMWR Week 45: Week ending November 12, 2011



## Influenza Activity Level

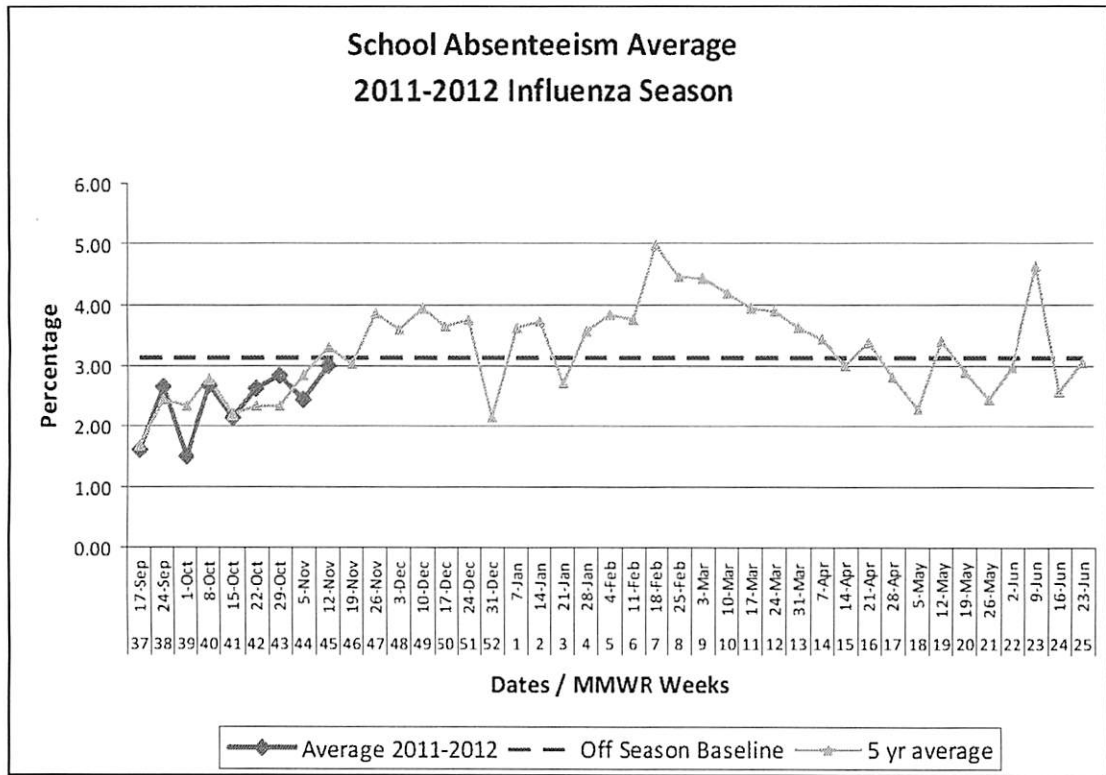
Hunterdon County: **LOW**

State of New Jersey: **LOW**

Regional: **LOW**

(Central West Region includes Hunterdon, Somerset, & Mercer Counties)

### Hunterdon County Sentinel School Absenteeism Average



### Hunterdon Activity

- One of four surveillance parameters is above baseline.
- As of November 12<sup>th</sup>, 4 samples have been found to be positive by viral culture or PCR for influenza AH3 statewide.
  - A total of 34 influenza tests were done in Hunterdon, with no positive results.

*Surveillance Parameters=schools, physician office, emergency department, or long-term care facility weekly surveillance data*

For more information contact  
 the Public Health Epidemiologist  
 (908) 788-1351

**HUNTERDON COUNTY**  
**DEPARTMENT OF HEALTH**  
PO Box 2900, Flemington, New Jersey 08822  
Date: December 2, 2011

Page 1 of 1



## **INFORMATION: New Jersey Animal Rabies Cases Summarized by County and Species, January - September 2011**

**To: HMC, Veterinarians, Animal Care & Control Professionals and Local Boards of Health**

**From: Colin T. Campbell, Infectious and Zoonotic Disease Program**  
**Phone: 609-826-4872; Email: [colin.campbell@doh.state.nj.us](mailto:colin.campbell@doh.state.nj.us)**  
**Faye E. Sorhage, Infectious and Zoonotic Disease Program**  
**Phone: 609-826-4872; Email: [faye.sorhage@doh.state.nj.us](mailto:faye.sorhage@doh.state.nj.us)**

### **New Jersey Animal Rabies Cases Summarized by County and Species, January - September 2011**

The summary of New Jersey Animal Rabies Cases by County and Species for January 1 - September 30, 2011 is available on the Department of Health and Senior Services (DHSS) website ([http://www.state.nj.us/health/cd/rabies\\_stats.shtml](http://www.state.nj.us/health/cd/rabies_stats.shtml)).

Through the third quarter of calendar year 2011, laboratory testing identified 200 terrestrial animals and 28 bats infected with rabies, for a state-wide total of 228 animal rabies cases.

The number of animal rabies cases to date in 2011 is similar to that in the first 9 months of 2010: however in 2011, there have been more cats and groundhogs and fewer skunks found positive compared to last year at this time. The DHSS recommends that all cats, including free-roaming cats, be kept currently vaccinated against rabies. Local health departments and animal control are urged to focus pet vaccination and animal control efforts on cats, as well as dogs. Since the raccoon rabies variant entered the State in 1989, cats have accounted for 90% of the domestic animal cases and are considered the terrestrial species of highest risk to transmit the disease to humans.

Of note, one horse was diagnosed with rabies in Salem County. Horses and other livestock occasionally become infected with rabies, usually from contact with rabid raccoons.

Bergen and Burlington Counties have had the highest number of confirmed rabid animals to date in 2011.

**For more information on rabies visit the NJDHSS website:**  
(<http://www.state.nj.us/health/cd/rabies/techinfo.shtml>) or contact the DHSS, Infectious and Zoonotic Disease Program at 609-826-4872.

For questions regarding this information, please contact the  
Hunterdon County Health Department at  
(908) 788-1351 or [health@co.hunterdon.nj.us](mailto:health@co.hunterdon.nj.us)

**HUNTERDON COUNTY**  
**DEPARTMENT OF HEALTH**  
PO Box 2900, Flemington, New Jersey 08822  
Date: December 2, 2011

Page 1 of 1



## **INFORMATION: Diabetes Care & Infection Control**

**To: Healthcare Providers, HMC, School Nurses, Long Term Care Facilities, Camps and Local Boards of Health**

**From:** Barbara Montana, MD, MPH, FACP, NJDHSS

**Phone:** 609-826-5964; **Email:** [barbara.montana@doh.state.nj.us](mailto:barbara.montana@doh.state.nj.us)

### **Diabetes Care & Infection Control**

The New Jersey Department of Health and Senior Services Communicable Disease Service would like to emphasize the need to adhere to the standards of practice to prevent patient-to-patient transmission of blood borne pathogens (hepatitis B, hepatitis C and human immunodeficiency virus) when using glucose meters and supplies. The Centers for Disease Control and Prevention (CDC) has become increasingly concerned about the risks associated with blood glucose monitoring procedures. The CDC reports that in the last 10 years alone, there have been at least 15 outbreaks of hepatitis B virus infection associated with providers failing to follow basic principles of infection control when assisting with blood glucose monitoring.

**All persons who assist others with glucose monitoring and/or insulin administration must follow the following infection control guidelines:**

- Whenever possible, blood glucose meters **should not be shared**. If they must be shared, the device should be **cleaned and disinfected after every use**, per manufacturer's instructions. If the manufacturer does not specify how the device should be cleaned and disinfected then it should not be shared
- Insulin pens and other medication cartridges and syringes are for single-patient-use only and should **never be used for more than one person**
- Fingerstick devices should never be used for more than one person

**These recommendations apply to all settings where blood glucose monitoring and insulin administration may occur including:**

- Hospitals or clinics
- Long-term care such as nursing homes and assisted living facilities
- Pre-hospital settings such as ambulances
- Senior centers
- Health fairs
- Correctional facilities
- Schools or camps

Please review documents titled *Infection Prevention during Blood Glucose Monitoring and Insulin Administration* and *Frequently Asked Questions (FAQs) regarding Assisted and Blood Glucose Monitoring and Insulin Administration* at <http://www.cdc.gov/injectionsafety/blood-glucose-monitoring.html>  
Other valuable information regarding injection safety is available on the CDC website at <http://www.cdc.gov/injectionsafety/>.

For questions regarding this information, please contact the  
Hunterdon County Health Department at  
(908) 788-1351 or [health@co.hunterdon.nj.us](mailto:health@co.hunterdon.nj.us)



COUNTY OF HUNTERDON NEW JERSEY  
DEPARTMENT OF HUMAN SERVICES

Division of  
PUBLIC HEALTH NURSING  
**OPEN HOUSE**

Date: Wednesday, December 14

Time: 11am-2pm

Place: New Public Health Nursing Office  
6 Gauntt Place (Lower Level)  
Flemington, NJ 08822

- \*See our new office
- \*Meet our staff
- \*Learn about our programs

For more information,  
please call 908-806-4570

